

# DYNAPAC SOIL ROLLERS



Dynapac DRS120





# SPECIFICATIONS



Operational weight	11,400 kg
Front module weight	6,800 kg
Static linear load	32 kg/cm
Drum width	2,130 mm
Drum thickness	25 mm
Amplitude - Frequency, high/low	1,8/0,9 – 33/33 (mm – Hz)
Centrifugal force, high/low	250/130 kN
Engine rated power	105 hp (79 KW)
Engine type	Dynapac

## AT A GLANCE...



### Innovation

Patented eccentric mechanism reduces energy consumption at start-up by 50%.



### Quality Results

Impressive parameters (e.g. high static liner load) maximize compaction and efficiency.



### High Productivity

Get constant feedback during operation with Dynapac compaction meter.

### Jobsite Confidence

Foldable canopy and new platform design ensure time-saving transportation and operator's safety.



### Low Cost of Ownership

Save cost with Dynapac engine and full aftersales service support by Dynapac.



### Excellent Serviceability

Wide hood opening and easy ground access to all main service points.



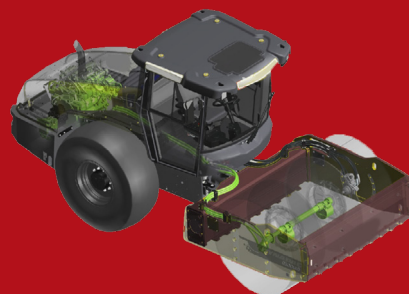
# FEATURES

## Efficiency Eccentrics

Eccentric elements are optimised by moving the weight to the right side of the axle, so less weight counteracts the movement at start-up.

Energy consumption at start-up is reduced by up to 50%, using less fuel.

## PATENTED INNOVATION



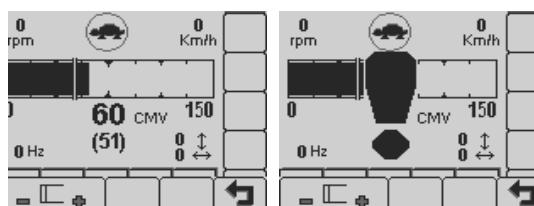
## QUALITY RESULTS



Static Linear Load  
**32kg/cm**

## Real-Time Compaction Control

Get constant feedback during operation with Dynapac compaction meter.



## HIGH PRODUCTIVITY



## JOBSITE CONFIDENCE

## Foldable Canopy

Foldable canopy and new platform design ensure time-saving transportation and operator's safety.

DRS120	
Height with folded Canopy	2.4 m
Transport height incl. low bed truck	3.8 m





## EXCELLENT SERVICEABILITY

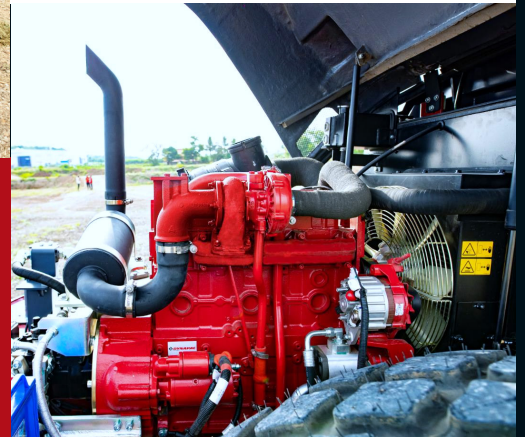


## Wide Hood Opening

- Wide hood opening for complete access to maintenance points.
- Ground level access to main maintenance points.

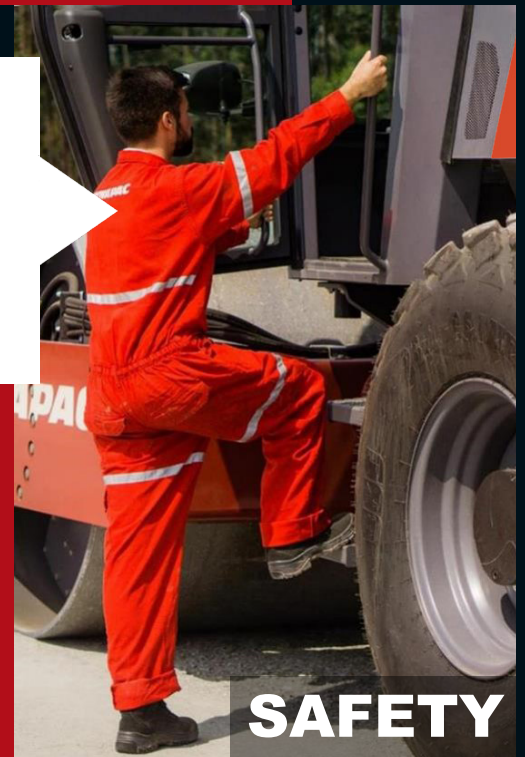
## Reliable Engine

- Dynapac engine
- 4 cylinders, water-cooled and turbo-charged
- 105HP @ 2200RPM

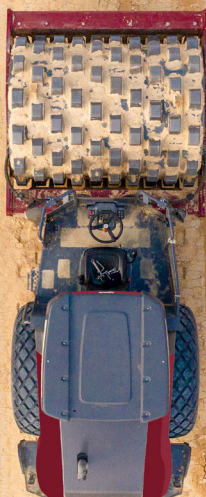


## Operator Safety in Mind

- Anti-Slip and self-cleaning steps
- Working/ driving lights
- Full view to the drum
- Comfort seat
- Rear view mirrors



## VERSATILITY



## Bolt-on PD Shell Kits

Easily transform smooth drum to versatile padfoot drum for working on all kinds of soil conditions.

## Dynapac Fleet Management

Dyn@link telematics system offers many possibilities to optimize fleet usage, reduce maintenance cost and save time and money.

## Aftermarket Support



### FLUIDS & LUBRICANTS

- Right fluids as confirmed by product design
- Right size of packing to avoid storage

### EXTENDED WARRANTY

- Extended warranty for peace of mind
- Service agreement to ensure higher uptime

### MAINTENANCE KITS

- All-in-one box concept for ease of ordering
- Designed to cover full maintenance
- Cost effective as well as easy to plan

### WEAR AND REPAIR KITS

- All-in-one box package for ease of ordering
- Right quality at right cost, for minimum cost of operation
- Different options to suit all maintenance

### TAILOR MADE TRAINING

- Various training modules geared towards our customer's requirement