

HAMM 3520

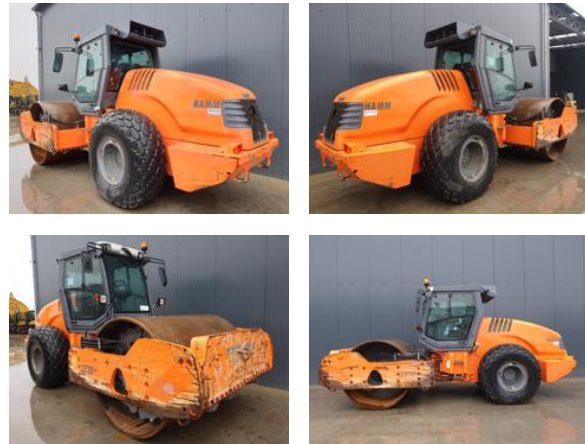
Description

Hamm 3520, Deutz TCD 2012 L06 2V, 155kW, EPA, CE, Erops cabin, 23.1-26 tyres, Frequency meter, Backup camera, Backup alarm, Beacon, In very good and clean condition.



Year	2011
Hours	4392
Weight	19800 kg
Serial number	H1761567
Reference	181371

[Download photos](#)



CONTACT US:
SALES@SMITMA.COM
+31(0)773999840

New/Excellent ★★★★★	Very good ★★★★☆	Good ★★★☆☆	Fair ★★★☆☆	Poor ★★☆☆☆
------------------------	--------------------	---------------	---------------	---------------



INSPECTION REPORT

FEATURES

Engine brand	Deutz TCD 2012 L06 2V,
Engine power in kW	155kW,

GENERAL APPEARANCE

Stamped serial number checked	Yes
Serial number plate checked	Yes
Paint	★★★★☆
Decals	★★★★☆
Bonnet	★★★★☆
Chassis	★★★★☆
Steps/ladders	★★★★☆
Cabin	★★★☆☆

ENGINE DETAILS AND CONDITION

Engine number	11003457
EPA sticker available	Yes
Air cleaner	Clean
Anti-freeze level °C	- 41
Diesel anti-freeze added	Yes
Diesel level ok	Yes
Cooling liquid level ok	Yes
Engine oil level ok	Yes
Exhaust manifold	★★★★☆
Muffler	★★★★☆
Exhaust stack	★★★★☆
Hoses	★★★★☆
Good cold start	Yes
Engine power	★★★★☆
Blow by	★★★★☆
Knocking	No
Compression in the radiator	No
Water in the oil	No
Oil in the water	No
Smoke	Normal

Engine leaks	No
Belts and pulleys	★★★★
Fan	★★★★
Radiator	★★★★

SAFETY ITEMS

Backup alarm	Working
Backup camera	Working
Seat belt	Available
Horn	Working
Parking brake	Working
Beacon	Working

OPERATOR STATION

Hourmeter	Working
Air conditioning	Working
Heater	Working
Gauges	Working
Switches	★★★★
Display	★★★★
Warnings	No warnings available
Mirrors	Not broken
Cabin glass	Not broken
Windshield wipers	Working
Interior lights	Working
Cabin floor	★★★★
Interior roof	★★★★
Seat	★★★★

DRUM

Vibratory system	★★★★
Drum surface	★★★★
Rubber mounts	★★★★
Drum scrapers	★★★★
Leakages	No
Drum oil level ok	Yes

STEERING

Articulate cylinder leaking	No
-----------------------------	----

Play articulate cylinder	★★★★★
Play articulating point	★★★★★

HYDRAULICS

Hydraulic oil level ok	Yes
Hydraulic lines and fittings	★★★★★
Hydraulic tank/sight glass and cap	★★★★★
Noise hydraulic pump normal	Yes
Operating condition hydraulics	★★★★★

DRIVE CHAIN

Oil level rear axle ok	Yes
Rear axle leakages	No
Wheel bolts and rims	★★★★★

ELECTRICAL, STARTING AND CHARGING SYSTEM

Alternator functioning	Yes
Wiring	★★★★★
Batteries	★★★★★
Starter	★★★★★
Cabin lights working	Few lights don't work

TYRES

REAR LEFT TYRES

Percentage life remaining 70%

REAR RIGHT TYRES

Percentage life remaining 70%

New/Excellent



Very good



Good



Fair



Poor

