

HAMM 3412 PD

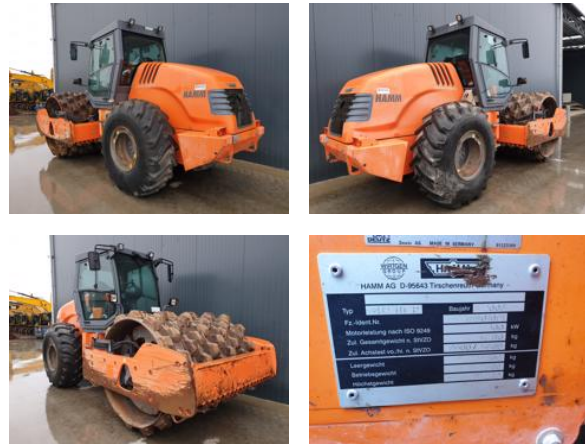
Description

Hamm 3412 PD, Deutz TCD 2012 L04 2V, 100kW, EPA, Erops cabin, 23.1 - 26 tyres, Compaction meter, Frequency meter, Speed meter, In very good and clean condition.



Year	2008
Hours	7000
Weight	12200
Serial number	H1801091
Reference	181758

[Download photos](#)



CONTACT US:
SALES@SMITMA.COM
+31(0)773999840

New/Excellent ★★★★★	Very good ★★★★☆	Good ★★★☆☆	Fair ★★★☆☆	Poor ★☆☆☆☆
------------------------	--------------------	---------------	---------------	---------------



INSPECTION REPORT

FEATURES

Engine brand	Deutz TCD 2012 L04 2V,
Engine power in kW	100kW,

GENERAL APPEARANCE

Stamped serial number checked	Yes
Serial number plate checked	Yes
Paint	★★★★☆
Bonnet	★★★★☆
Chassis	★★★★☆
Steps/ladders	★★★★☆
Cabin	★★★★☆

ENGINE DETAILS AND CONDITION

Engine number	10693860
Air cleaner	Clean
Anti-freeze level °C	- 30
Diesel anti-freeze added	Yes
Diesel level ok	Yes
Cooling liquid level ok	Yes
Engine oil level ok	Yes
Exhaust manifold	★★★★☆
Muffler	★★★★☆
Exhaust stack	★★★★☆
Hoses	★★★★☆
Good cold start	Yes
Engine power	★★★★☆
Blow by	★★★★☆
Knocking	No
Compression in the radiator	No
Water in the oil	No
Oil in the water	No
Smoke	Normal
Engine leaks	No
Belts and pulleys	★★★★☆

Fan	★★★★☆
Radiator	★★★★☆

SAFETY ITEMS

Seat belt	Available
Horn	Working
Parking brake	Working

OPERATOR STATION

Hourmeter	Working
Gauges	Working
Switches	★★★★☆
Display	★★★★☆
Warnings	No warnings available
Mirrors	Not broken
Cabin glass	Not broken
Windshield wipers	Working
Interior lights	Working
Cabin floor	★★★★☆
Interior roof	★★★★☆
Seat	★★★★☆

DRUM

Vibratory system	★★★★☆
Drum surface	★★★★☆
Rubber mounts	★★★★☆
Drum scrapers	★★★★☆
Leakages	No
Drum oil level ok	Yes

STEERING

Articulate cylinder leaking	No
Play articulate cylinder	★★★★☆
Play articulating point	★★★★☆

HYDRAULICS

Hydraulic oil level ok	Yes
Hydraulic lines and fittings	★★★★☆
Hydraulic tank/sight glass and cap	★★★★☆

Noise hydraulic pump normal	Yes
Operating condition hydraulics	★★★★☆

DRIVE CHAIN

Oil level rear axle ok	Yes
Rear axle leakages	No
Wheel bolts and rims	★★★★☆

ELECTRICAL, STARTING AND CHARGING SYSTEM

Alternator functioning	Yes
Wiring	★★★★☆
Batteries	★★★★☆
Starter	★★★★☆
Cabin lights working	Yes

TYRES

REAR LEFT TYRES

Percentage life remaining 50%

REAR RIGHT TYRES

Percentage life remaining 70%

New/Excellent ★★★★★	Very good ★★★★☆	Good ★★★★☆	Fair ★★★☆☆	Poor ★★☆☆☆
------------------------	--------------------	---------------	---------------	---------------

